

भारत सरकार
GOVERNMENT OF INDIA

दिल्ली राजपत्र

Delhi Gazette

एस.जी.-डी.एल.-अ.-19012023-242076
SG-DL-E-19012023-242076असाधारण
EXTRAORDINARY
प्राधिकार से प्रकाशित
PUBLISHED BY AUTHORITY

सं. 29]	दिल्ली, बुधवार, जनवरी 18, 2023/पौष 28, 1944	[रा.रा.क्षे.दि. सं. 453
No. 29]	DELHI, WEDNESDAY, JANUARY 18, 2023/PAUSHA 28, 1944	[N. C. T. D. No. 453

भाग IV
PART IVराष्ट्रीय राजधानी राज्य क्षेत्र दिल्ली सरकार
GOVERNMENT OF THE NATIONAL CAPITAL TERRITORY OF DELHI

वन एवं वन्यजीव विभाग

अधिसूचना

दिल्ली, 18 जनवरी, 2023

F. 2 (01) /DCF (W)/PF DMRC/2022-23/3009-18.—गृह मंत्रालय, भारत सरकार की दिनांक 24.08.1950 की अधिसूचना संख्या 104-जे, दिनांक 06.12.1950 की अधिसूचना संख्या 146-जे तथा दिनांक 1 नवम्बर, 1956 की एसआरओ संख्या 2536 के अनुसार तथा भारतीय वन अधिनियम, 1927 (1927 का XVI) की धारा 29 द्वारा प्रदत्त शक्तियों का प्रयोग करते हुए राष्ट्रीय राजधानी क्षेत्र दिल्ली के उपराज्यपाल, आधिकारिक राजपत्र में अधिसूचना के प्रकाशन की दिनांक से नीचे दी गई अनुसूची में वर्णित भूमि को 'संरक्षित वन' घोषित करते हैं।

अनुसूची

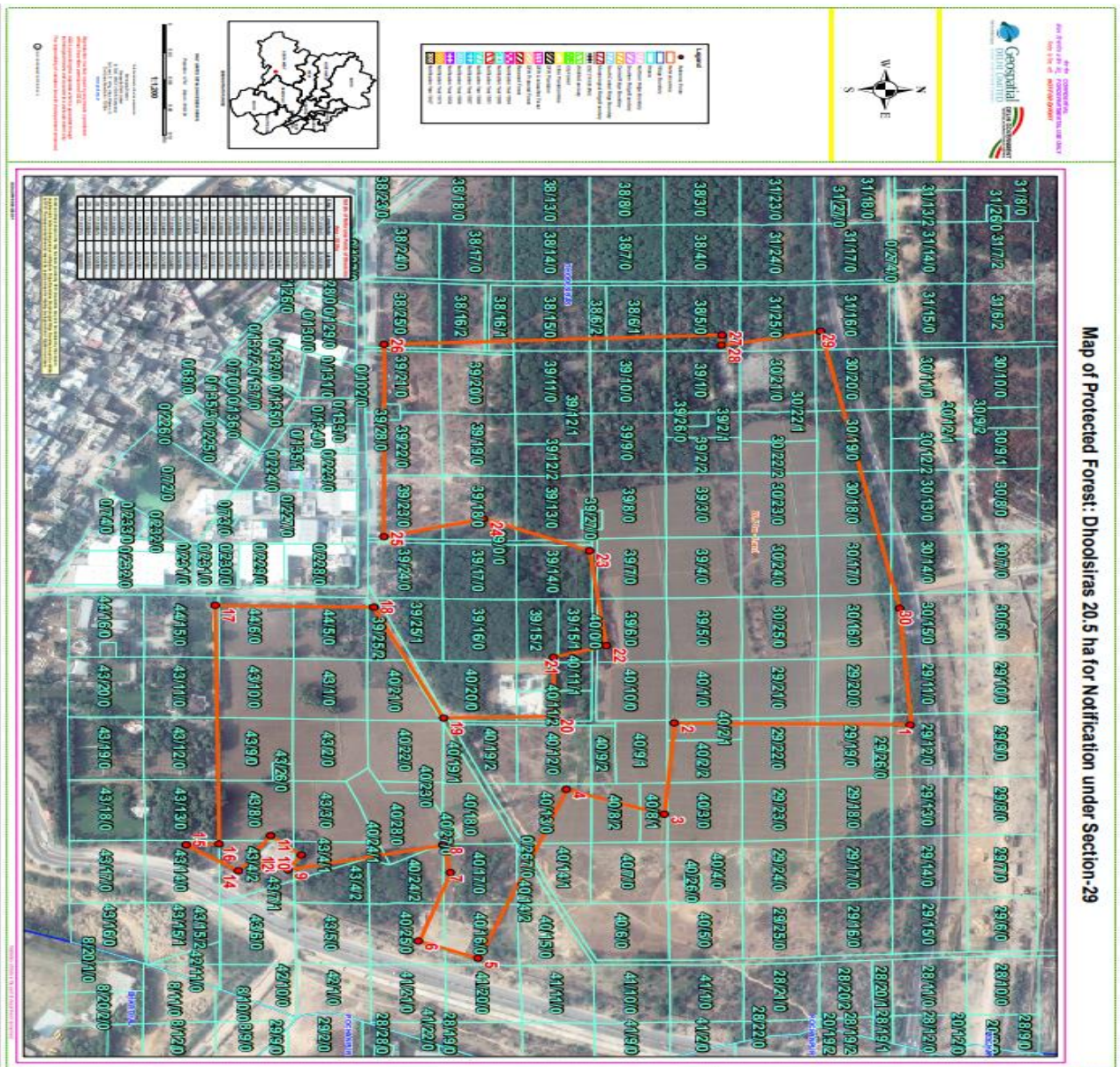
क्रम संख्या	जिला	तहसील	गाँव	खसरा नं.	क्षेत्रफल (हेक्टेयर में)	भू-निर्देशांक		
1.	दक्षिण पश्चिम	कापसहेड़ा	धूलसिरास	31/16/0 (Partly),	20.57	1	28.56010773870	77.03504520760
						2	28.55837828140	77.03498716430

				30/20/0	3	28.55829085510	77.03599453660
				(Partly),	4	28.55757542740	77.03570653350
				30/19/0	5	28.55690174510	77.03755879250
				(Partly),	6	28.55646658520	77.03736071450
				30/18/0	7	28.55671324810	77.03660903580
				(Partly),	8	28.55666334430	77.03630254410
				30/17/0	9	28.55552367610	77.03655513900
				(Partly),	10	28.55562373390	77.03639439160
				30/14/0	11	28.55540179610	77.03617639400
				(Partly),	12	28.55528266700	77.03636778670
				30/16/0,	13	28.55529101690	77.03639817600
				30/15/0	14	28.55516052090	77.03655948470
				(Partly),	15	28.55478021890	77.03626610170
				29/20/0,	16	28.55502171420	77.03626027580
				29/11/0	17	28.55503343740	77.03362493280
				(Partly),	18	28.55619638610	77.03366830730
				29/12/0	19	28.55668901020	77.03490248540
				(Partly),	20	28.55749833390	77.03489919150
				29/19/0	21	28.55750484440	77.03424640530
				(Partly),	22	28.55789482080	77.03412625460
				31/25/0	23	28.55778666030	77.03307560600
				(Partly),	24	28.55701493130	77.03271101920
				30/21/0,	25	28.55628222390	77.03289113190
				30/22/2,	26	28.55631384490	77.03076796500
				30/23/0,	27	28.55879417870	77.03071314460
				30/24/0,	28	28.55878628370	77.03082549630
				30/25/0,	29	28.55951541600	77.03068351660
				29/21/0,	30	28.56005024880	77.03375475810
				29/22/0			
				(Partly),			
				40/2/1			
				(Partly),			
				40/1/0,			
				40/2/2			
				(Partly),			
				39/5/0,			
				39/4/0,			
				39/3/0,			
				39/2/2,			
				39/2/1,			
				39/26/0,			

				39/1/0, 38/5/0 (Partly), 40/8/1 (Partly), 40/8/2 (Partly), 40/9/1, 40/9/2, 40/10/0, 39/6/0 (Partly), 39/7/0, 39/8/0, 39/9/0, 39/10/0, 38/6/1 (Partly), 38/6/2 (Partly), 38/15/0 (Partly), 39/11/0, 39/12/1, 39/12/2, 39/13/0 (Partly), 39/27/0, 39/14/0 (Partly), 38/16/1 (Partly), 38/16/2 (Partly), 39/20/0, 39/19/0, 39/18/0 (Partly), 38/25/0 (Partly), 39/21/0				
--	--	--	--	---	--	--	--	--

				(Partly), 39/28/0, 39/22/0 (Partly), 39/23/0 (Partly), 40/13/0 (Partly), 40/12/0, 40/11/2 (Partly), 40/11/1 (Partly), 39/15/1 (Partly), 43/14/0 (Partly), 43/4/2 (Partly), 43/8/0., 43/26/0, 43/9/0, 43/10/0, 44/6/0 (Partly), 43/1/0, 43/2/0, 43/3/0, 43/4/1 (Partly), 40/24/1 (Partly), 48/28/0 (Partly), 40/23/0, 40/22/0, 40/21/0, 39/25/2 (Partly), 40/25/0 (Partly),				
--	--	--	--	--	--	--	--	--

				40/24/2 (Partly), 40/16/0 (Partly), 40/17/0 (Partly), 40/27/0, 40/19/1, 40/19/2, 40/18/0			
--	--	--	--	---	--	--	--



राष्ट्रीय राजधानी क्षेत्र दिल्ली के उपराज्यपाल के आदेश द्वारा और उनके नाम पर,
ए. के. सिंह, प्रधान सचिव (पर्यावरण एवं वन)

DEPARTMENT OF FORESTS AND WILDLIFE

NOTIFICATION

Delhi, the 18th January, 2023

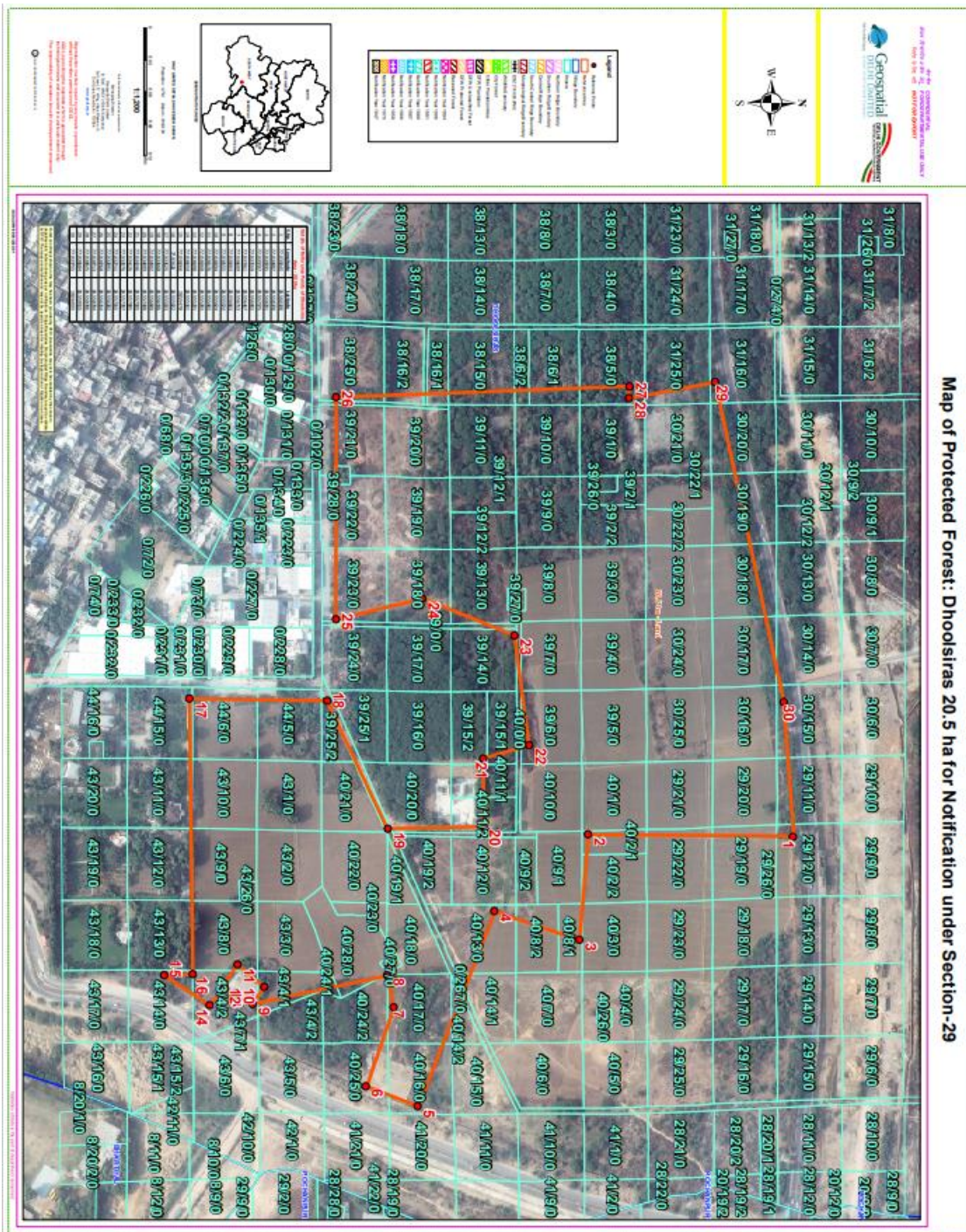
F. 2 (01) /DCF (W)/PF DMRC/2022-23/3009-18.—In exercise of the Powers conferred by section 29 of Indian Forest Act, 1927 (XVI of 1927), read with the Government of India, Ministry of Home, Notification No. 104-J and 146-J dated 24.08.50 and 06.12.50, read with S.R.O. no 2536 dated 1st November, 1956, the Lt. Governor of National Capital Territory of Delhi is pleased to declare the land described in the Schedule below to be 'Protected Forests' with effect from the date of publication of the Notification in the Official Gazette.

SCHEDULE

S. No.	District	Tehsil	Village	Khasras	Area (in Ha.)	Geo –Coordinates				
							Latitude	Longitude		
1.	South-West	Kapashera	DhoolSiras	31/16/0	20.57	1	28.56010773870	77.03504520760		
				(Partly),		2	28.55837828140	77.03498716430		
				30/20/0		(Partly),	3	28.55829085510	77.03599453660	
				(Partly),		30/19/0	(Partly),	4	28.55757542740	77.03570653350
				(Partly),		30/18/0	(Partly),	5	28.55690174510	77.03755879250
				(Partly),		30/17/0	(Partly),	6	28.55646658520	77.03736071450
				(Partly),		30/14/0	(Partly),	7	28.55671324810	77.03660903580
				(Partly),		30/16/0,	(Partly),	8	28.55666334430	77.03630254410
				30/15/0		(Partly),	9	28.55552367610	77.03655513900	
				(Partly),		29/20/0,	(Partly),	10	28.55562373390	77.03639439160
				29/11/0		(Partly),	11	28.55540179610	77.03617639400	
				(Partly),		29/12/0	(Partly),	12	28.55528266700	77.03636778670
				(Partly),		29/19/0	(Partly),	13	28.55529101690	77.03639817600
				(Partly),		31/25/0	(Partly),	14	28.55516052090	77.03655948470
				(Partly),		30/21/0,	(Partly),	15	28.55478021890	77.03626610170
				30/22/2,		(Partly),	16	28.55502171420	77.03626027580	
				30/23/0,		(Partly),	17	28.55503343740	77.03362493280	
				30/24/0,		(Partly),	18	28.55619638610	77.03366830730	
				30/25/0,		(Partly),	19	28.55668901020	77.03490248540	
				29/21/0,		(Partly),	20	28.55749833390	77.03489919150	
				29/22/0		(Partly),	21	28.55750484440	77.03424640530	
				(Partly),		40/2/1	(Partly),	22	28.55789482080	77.03412625460
				(Partly),		40/1/0,	(Partly),	23	28.55778666030	77.03307560600
				40/2/2		(Partly),	24	28.55701493130	77.03271101920	
				(Partly),		39/5/0,	25	28.55628222390	77.03289113190	
							26	28.55631384490	77.03076796500	

				39/4/0,	27	28.55879417870	77.03071314460
				39/3/0,	28	28.55878628370	77.03082549630
				39/2/2,			
				39/2/1,	29	28.55951541600	77.03068351660
				39/26/0,	30	28.56005024880	77.03375475810
				39/1/0,			
				38/5/0			
				(Partly),			
				40/8/1			
				(Partly),			
				40/8/2			
				(Partly),			
				40/9/1,			
				40/9/2,			
				40/10/0,			
				39/6/0			
				(Partly),			
				39/7/0,			
				39/8/0,			
				39/9/0,			
				39/10/0,			
				38/6/1			
				(Partly),			
				38/6/2			
				(Partly),			
				38/15/0			
				(Partly),			
				39/11/0,			
				39/12/1,			
				39/12/2,			
				39/13/0			
				(Partly),			
				39/27/0,			
				39/14/0			
				(Partly),			
				38/16/1			
				(Partly),			
				38/16/2			
				(Partly),			
				39/20/0,			
				39/19/0,			
				39/18/0			
				(Partly),			
				38/25/0			
				(Partly),			
				39/21/0			
				(Partly),			
				39/28/0,			
				39/22/0			
				(Partly),			
				39/23/0			

				(Partly), 40/13/0 (Partly), 40/12/0, 40/11/2 (Partly), 40/11/1 (Partly), 39/15/1 (Partly), 43/14/0 (Partly), 43/4/2 (Partly), 43/8/0., 43/26/0, 43/9/0, 43/10/0, 44/6/0 (Partly), 43/1/0, 43/2/0, 43/3/0, 43/4/1 (Partly), 40/24/1 (Partly), 48/28/0 (Partly), 40/23/0, 40/22/0, 40/21/0, 39/25/2 (Partly), 40/25/0 (Partly), 40/24/2 (Partly), 40/16/0 (Partly), 40/17/0 (Partly), 40/27/0, 40/19/1, 40/19/2, 40/18/0				
--	--	--	--	---	--	--	--	--



By Order and in the Name of the
Lieutenant Governor of National Capital Territory of Delhi,
A. K. SINGH, Pr. Secy. (Environment & Forests)