

भारत सरकार
GOVERNMENT OF INDIA



दिल्ली राजपत्र Delhi Gazette

एस.जी.-डी.एल.-अ.-08042022-234946
SG-DL-E-08042022-234946

असाधारण
EXTRAORDINARY
प्राधिकार से प्रकाशित
PUBLISHED BY AUTHORITY

सं. 225]	दिल्ली, बुधवार, अप्रैल 6, 2022/चैत्र 16, 1944	[रा.रा.रा.क्षे.दि. सं. 3
No. 225]	DELHI, WEDNESDAY, APRIL 6, 2022/CHAITRA 16, 1944	[N. C. T. D. No. 3

भाग IV
PART IV

राष्ट्रीय राजधानी राज्य क्षेत्र दिल्ली सरकार
GOVERNMENT OF THE NATIONAL CAPITAL TERRITORY OF DELHI

वन एवं वन्यजीव विभाग

अधिसूचना

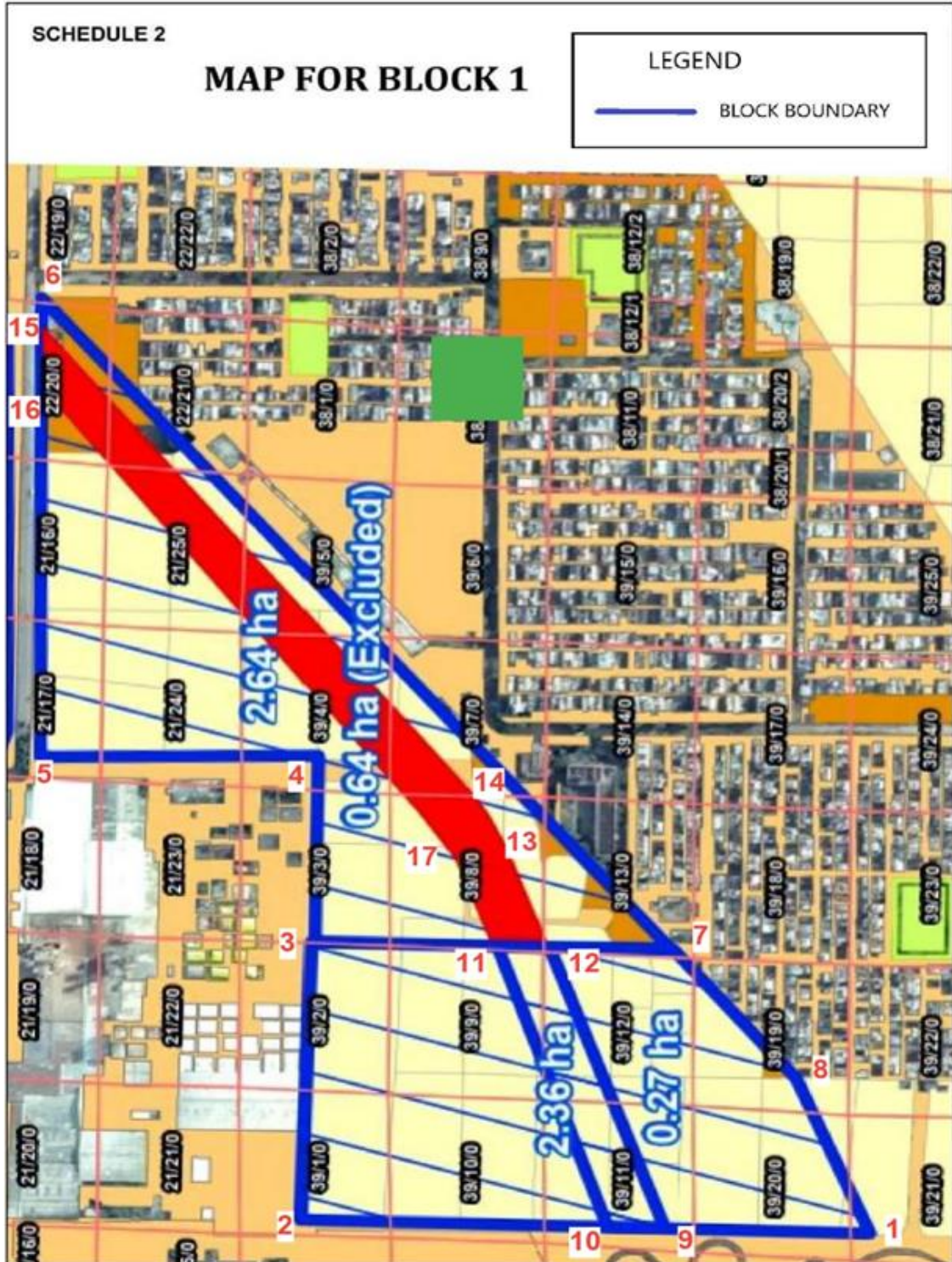
दिल्ली, 6 अप्रैल, 2022

एफ. सं. 03/एनएफडी/भूमि/47.96 हेक्टेयर/एफसीए/अधिसूचना/ 2021-22/140-48.—गृह मंत्रालय, भारत सरकार की दिनांक 24.08.1950 की अधिसूचना संख्या 104-जे, दिनांक 06.12.1950 की अधिसूचना संख्या 146-जे तथा दिनांक 1 नवंबर, 1956 की एसआरओ संख्या 2536 के अनुसार तथा भारतीय वन अधिनियम, 1927 (1927 का XVI) की धारा 29 द्वारा प्रदत्त शक्तियों का प्रयोग करते हुए राष्ट्रीय राजधानी क्षेत्र दिल्ली के उपराज्यपाल, आधिकारिक राजपत्र में अधिसूचना के प्रकाशन की दिनांक से नीचे दी गई अनुसूची में वर्णित भूमि को 'संरक्षित वन' घोषित करते हैं।

अनुसूची

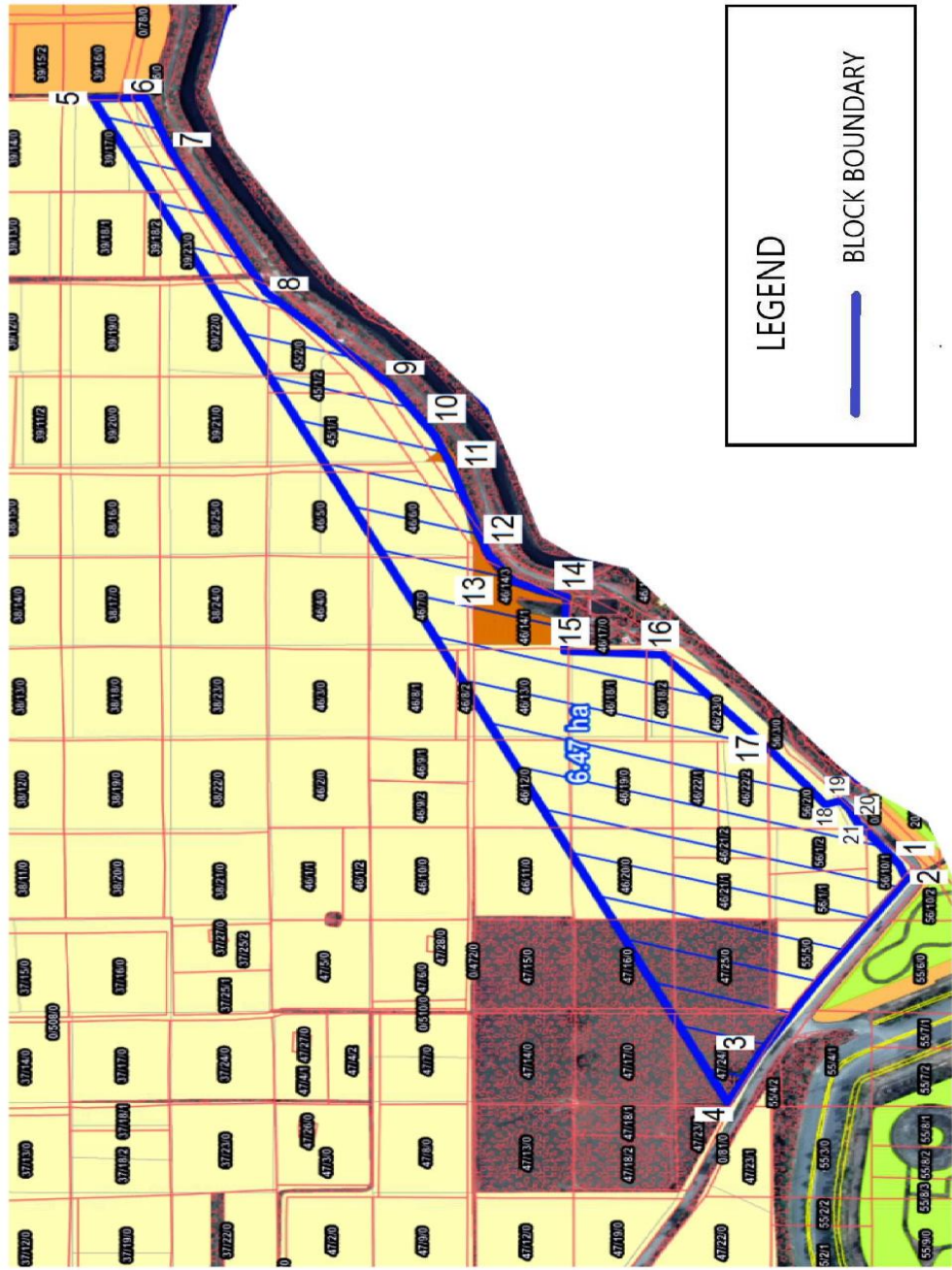
क्रमांक	जिला	तहसील	गाँव	खसरा नं	क्षेत्रफल (हेक्टेयर में)	भू-निर्देशांक और नक्शा
1.	उत्तर	नरेला	सनोथ और होलम्बी कलान	नीचे अनुलग्नक I के रूप में संलग्न है	47.96	नीचे अनुलग्नक I के रूप में संलग्न है

अनुलग्नक I



MAP OF BLOCK 2

SCHEDULE 2

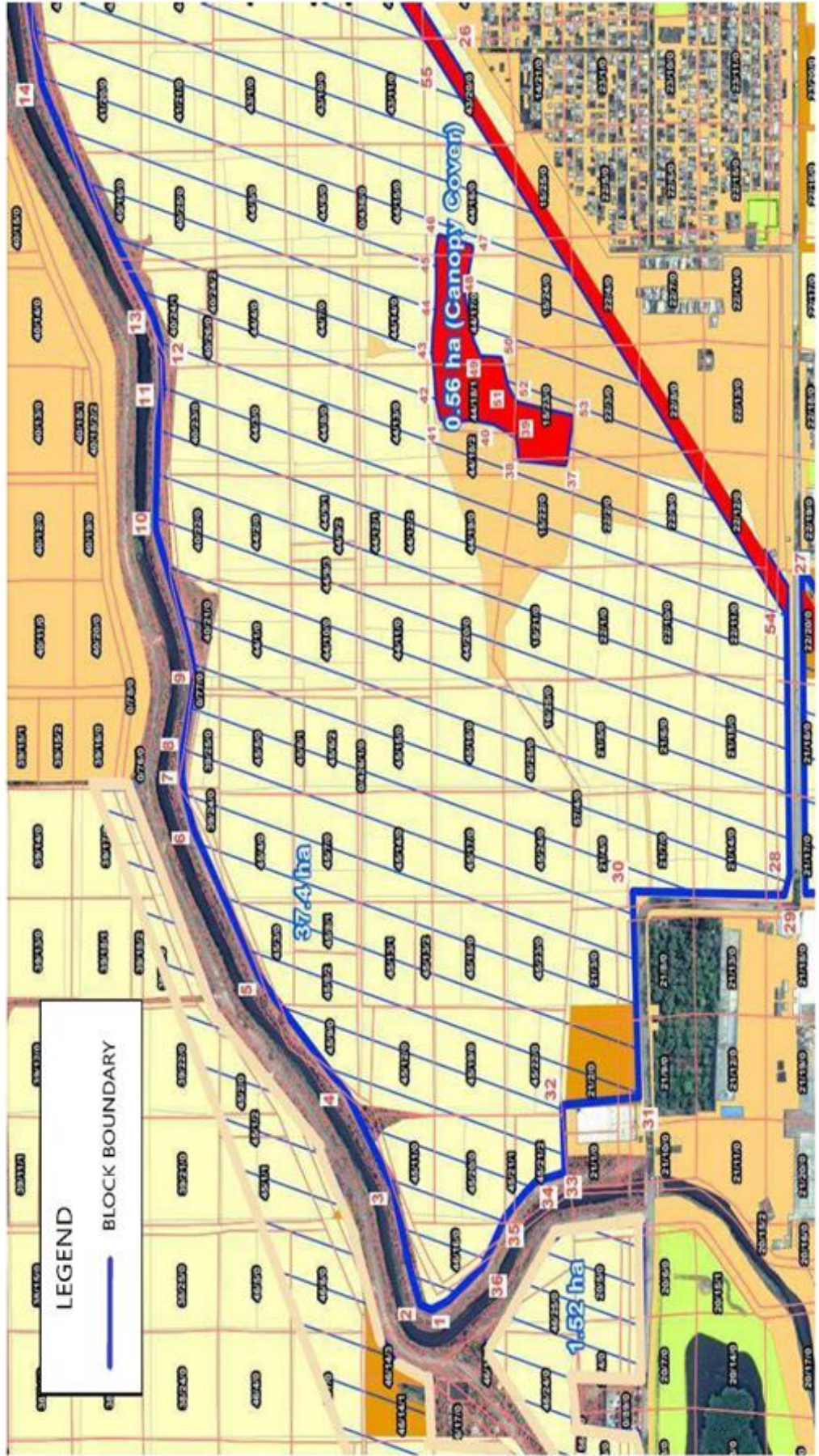


MAP OF BLOCK 4

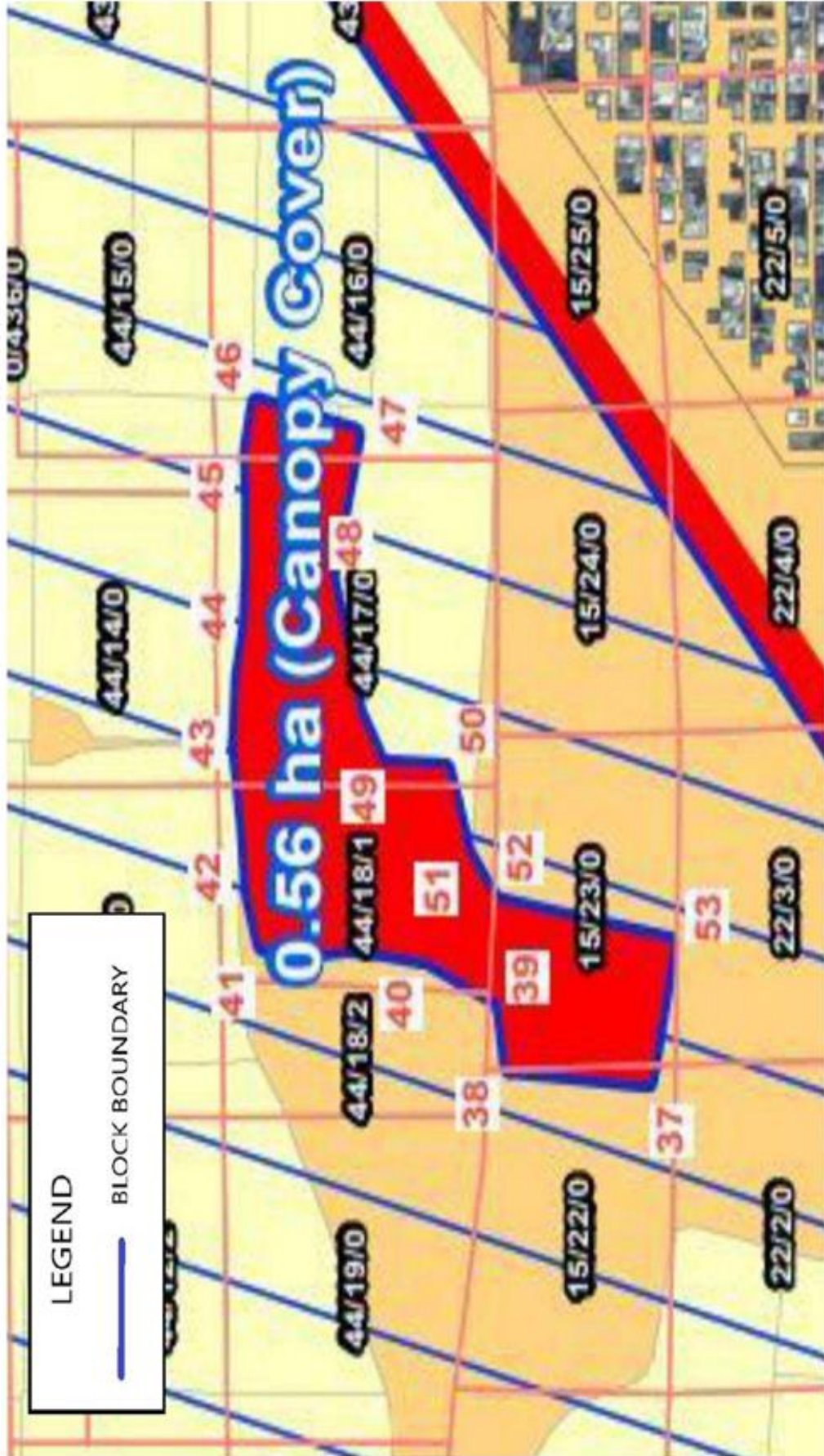
SCHEDULE 2



SCHEDULE 2
MAP OF BLOCK 4 PART 2



SCHEDULE 2
MAP OF BLOCK 4 PART 4



Geocoordinates of Block 1		
S.No.	Latitude	Longitude
1	28°48'23.92"N	77° 4'59.46"E
2	28°48'31.32"N	77° 4'59.70"E
3	28°48'31.15"N	77° 5'4.19"E
4	28°48'31.10"N	77° 5'7.18"E
5	28°48'34.70"N	77° 5'7.18"E
6	28°48'34.68"N	77° 5'14.57"E
7	28°48'26.48"N	77° 5'4.05"E
8	28°48'24.89"N	77° 5'1.97"E
9	28°48'26.60"N	77° 4'59.56"E
10	28°48'27.34"N	77° 4'59.58"E
11	28°48'28.78"N	77° 5'4.11"E
12	28°48'28.09"N	77° 5'4.10"E
13	28°48'28.66"N	77° 5'5.72"E
14	28°48'28.89"N	77° 5'6.25"E
15	28°48'34.67"N	77° 5'14.10"E
16	28°48'34.69"N	77° 5'13.08"E
17	28°48'29.31"N	77° 5'5.52"E

Geocoordinates of Block 2		
S. No.	Latitude	Longitude
1	28°48'38.73"N	77° 4'48.92"E
2	28°48'38.61"N	77° 4'48.53"E
3	28°48'41.59"N	77° 4'43.79"E
4	28°48'42.16"N	77° 4'42.53"E
5	28°48'54.17"N	77° 5'9.98"E
6	28°48'53.15"N	77° 5'9.98"E
7	28°48'52.61"N	77° 5'8.38"E
8	28°48'50.88"N	77° 5'4.68"E
9	28°48'48.47"N	77° 5'2.10"E
10	28°48'47.64"N	77° 5'0.74"E
11	28°48'47.36"N	77° 4'60.00"E
12	28°48'46.66"N	77° 4'57.52"E
13	28°48'46.16"N	77° 4'56.73"E
14	28°48'45.12"N	77° 4'56.31"E
15	28°48'45.19"N	77° 4'54.83"E
16	28°48'43.28"N	77° 4'54.68"E
17	28°48'41.27"N	77° 4'52.18"E
18	28°48'40.16"N	77° 4'50.58"E
19	28°48'39.86"N	77° 4'50.65"E
20	28°48'39.70"N	77° 4'50.48"E
21	28°48'39.53"N	77° 4'50.04"E

Geocoordinates of Block 3		
S.No.	Latitude	Longitude
1	28°48'39.48"N	77° 4'51.20"E
2	28°48'40.28"N	77° 4'52.52"E

3	28°48'41.22"N	77° 4'53.82"E
4	28°48'43.68"N	77° 4'56.98"E
5	28°48'42.98"N	77° 4'57.64"E
6	28°48'41.87"N	77° 4'59.35"E
7	28°48'41.48"N	77° 4'59.61"E
8	28°48'39.32"N	77° 4'59.79"E
9	28°48'39.33"N	77° 4'57.95"E
10	28°48'39.45"N	77° 4'56.20"E
11	28°48'41.27"N	77° 4'56.26"E
12	28°48'41.23"N	77° 4'55.04"E
13	28°48'39.49"N	77° 4'54.98"E

Geocoordinates for Block 4**Geocoordinates of Block 4**

S.No.	Latitude	Longitude
1	28°48'45.11"N	77° 4'57.89"E
2	28°48'45.42"N	77° 4'58.00"E
3	28°48'46.11"N	77° 5'0.63"E
4	28°48'47.30"N	77° 5'2.75"E
5	28°48'49.74"N	77° 5'5.59"E
6	28°48'51.47"N	77° 5'8.94"E
7	28°48'51.77"N	77° 5'10.21"E
8	28°48'51.75"N	77° 5'10.75"E
9	28°48'51.40"N	77° 5'12.51"E
10	28°48'52.39"N	77° 5'15.81"E
11	28°48'52.17"N	77° 5'19.05"E
12	28°48'52.24"N	77° 5'20.21"E
13	28°48'52.41"N	77° 5'20.68"E
14	28°48'55.36"N	77° 5'26.01"E
15	28°48'56.22"N	77° 5'31.66"E
16	28°48'56.46"N	77° 5'32.97"E
17	28°48'56.50"N	77° 5'33.79"E
18	28°48'56.44"N	77° 5'34.29"E
19	28°48'56.68"N	77° 5'35.52"E
20	28°48'58.08"N	77° 5'37.55"E
21	28°48'58.19"N	77° 5'38.14"E
22	28°48'57.61"N	77° 5'39.75"E
23	28°48'57.10"N	77° 5'40.61"E

24	28°48'56.19"N	77° 5'42.25"E
25	28°48'56.06"N	77° 5'42.91"E
26	28°48'44.13"N	77° 5'26.44"E
27	28°48'35.05"N	77° 5'14.16"E
28	28°48'35.11"N	77° 5'7.60"E
29	28°48'35.28"N	77° 5'7.12"E
30	28°48'39.42"N	77° 5'7.32"E
31	28°48'39.37"N	77° 5'2.60"E
32	28°48'41.43"N	77° 5'2.48"E
33	28°48'41.38"N	77° 5'0.95"E
34	28°48'42.18"N	77° 5'0.73"E
35	28°48'43.03"N	77° 4'59.96"E
36	28°48'43.66"N	77° 4'58.86"E
37	28°48'41.13"N	77° 5'17.15"E
38	28°48'42.33"N	77° 5'17.27"E
39	28°48'42.40"N	77° 5'17.76"E
40	28°48'43.09"N	77° 5'18.09"E
41	28°48'44.50"N	77° 5'18.22"E
42	28°48'44.61"N	77° 5'18.74"E
43	28°48'44.70"N	77° 5'19.71"E
44	28°48'44.69"N	77° 5'20.28"E
45	28°48'44.60"N	77° 5'21.95"E
46	28°48'44.49"N	77° 5'22.32"E
47	28°48'43.67"N	77° 5'22.06"E
48	28°48'43.88"N	77° 5'21.02"E
49	28°48'43.47"N	77° 5'19.57"E
50	28°48'42.89"N	77° 5'19.52"E
51	28°48'42.75"N	77° 5'18.87"E
52	28°48'42.49"N	77° 5'18.49"E
53	28°48'40.96"N	77° 5'18.16"E
54	28°48'35.11"N	77° 5'13.62"E
55	28°48'44.41"N	77° 5'26.34"E

राष्ट्रीय राजधानी क्षेत्र दिल्ली के उपराज्यपाल
के आदेश द्वारा और उनके नाम पर,
संजीव खिरवार, प्रमुख सचिव (पर्यावरण एवं वन)

DEPARTMENT OF FORESTS AND WILDLIFE

NOTIFICATION

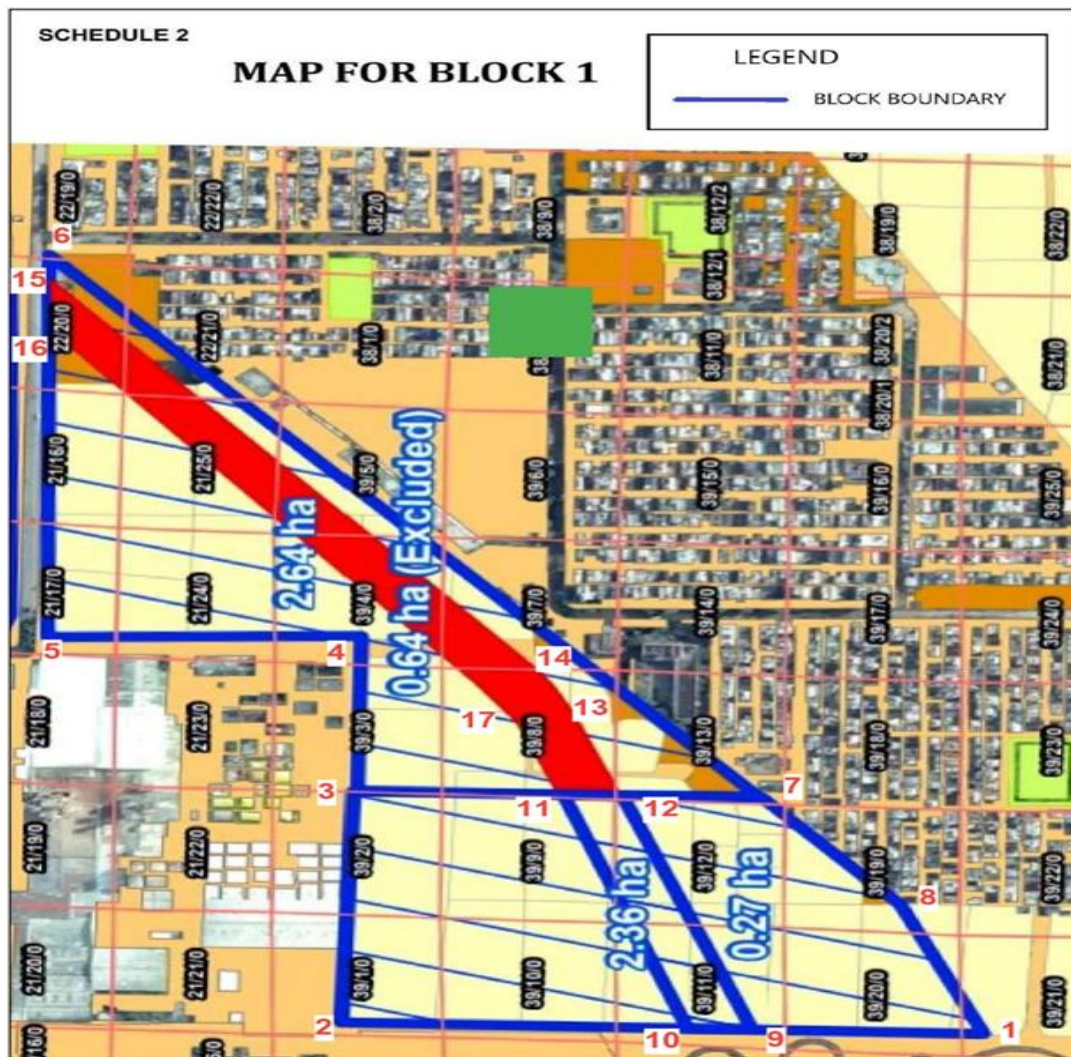
Delhi, the 6th April, 2022

F.No. 03/NFD/Land/47.96 Ha./ FCA/Notification/ 2021-22/140-48.—In exercise of the Powers conferred by section 29 of Indian Forest Act, 1927 (XVI of 1927), read with the Government of India, Ministry of Home, Notification No. 104-J and 146-J dated 24.08.50 and 06.12.50, read with S.R.O. no 2536 dated 1st November, 1956, the Lt. Governor of National Capital Territory of Delhi is pleased to declare the land described in the Schedule below to be ‘Protected Forests’ with effect from the date of publication of the Notification in the Official Gazette.

SCHEDULE

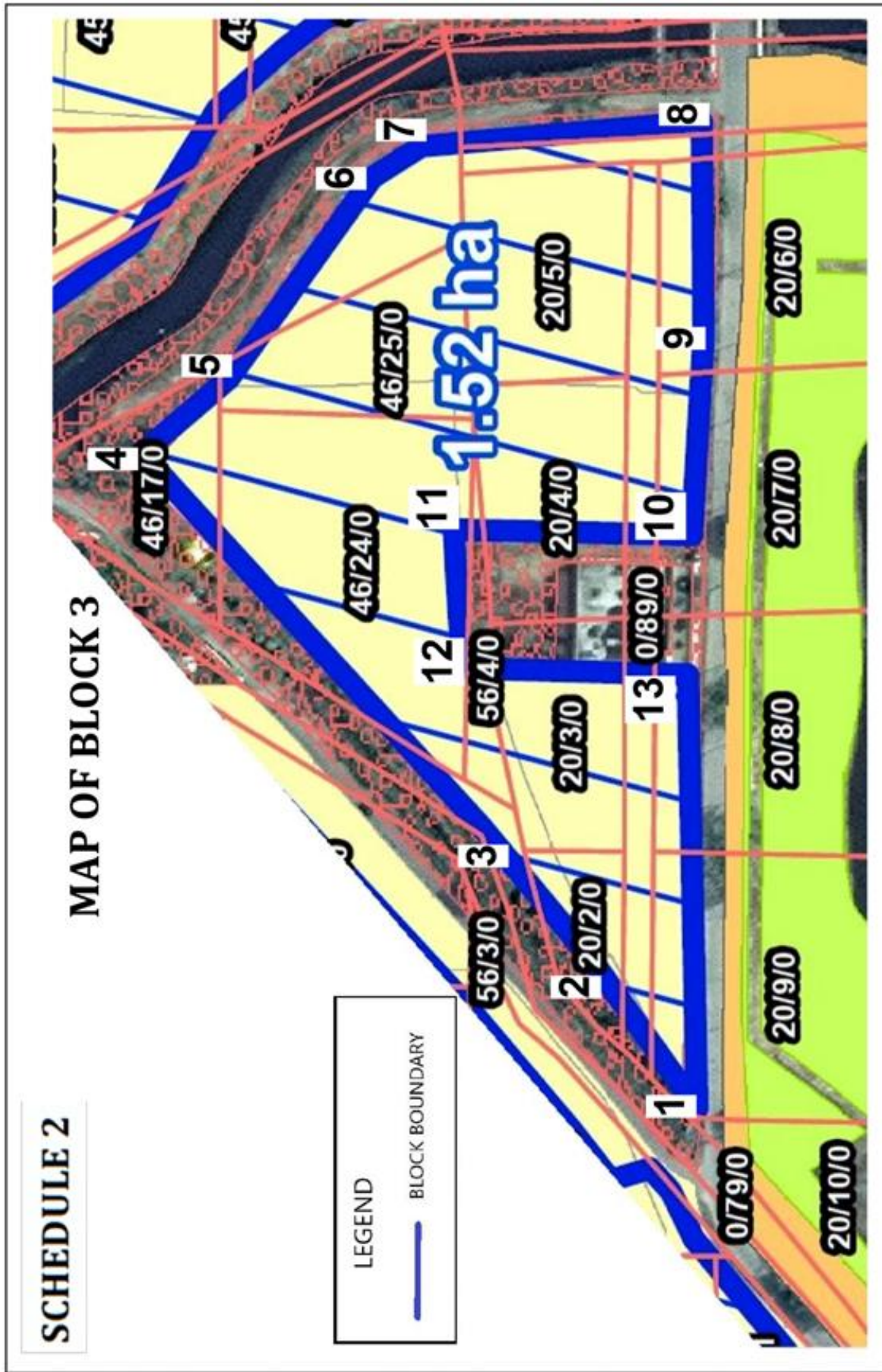
S.No	District	Tehsil	Village	Khasra No.	Area (in Ha.)	Geo –coordinates & Map
1.	North	Narela	Sanoth & Holambi Kalan	Enclosed below as Annexure I	47.96	Enclosed below as Schedule-2

ANNEXURE I



SCHEDULE 2 MAP OF BLOCK 2



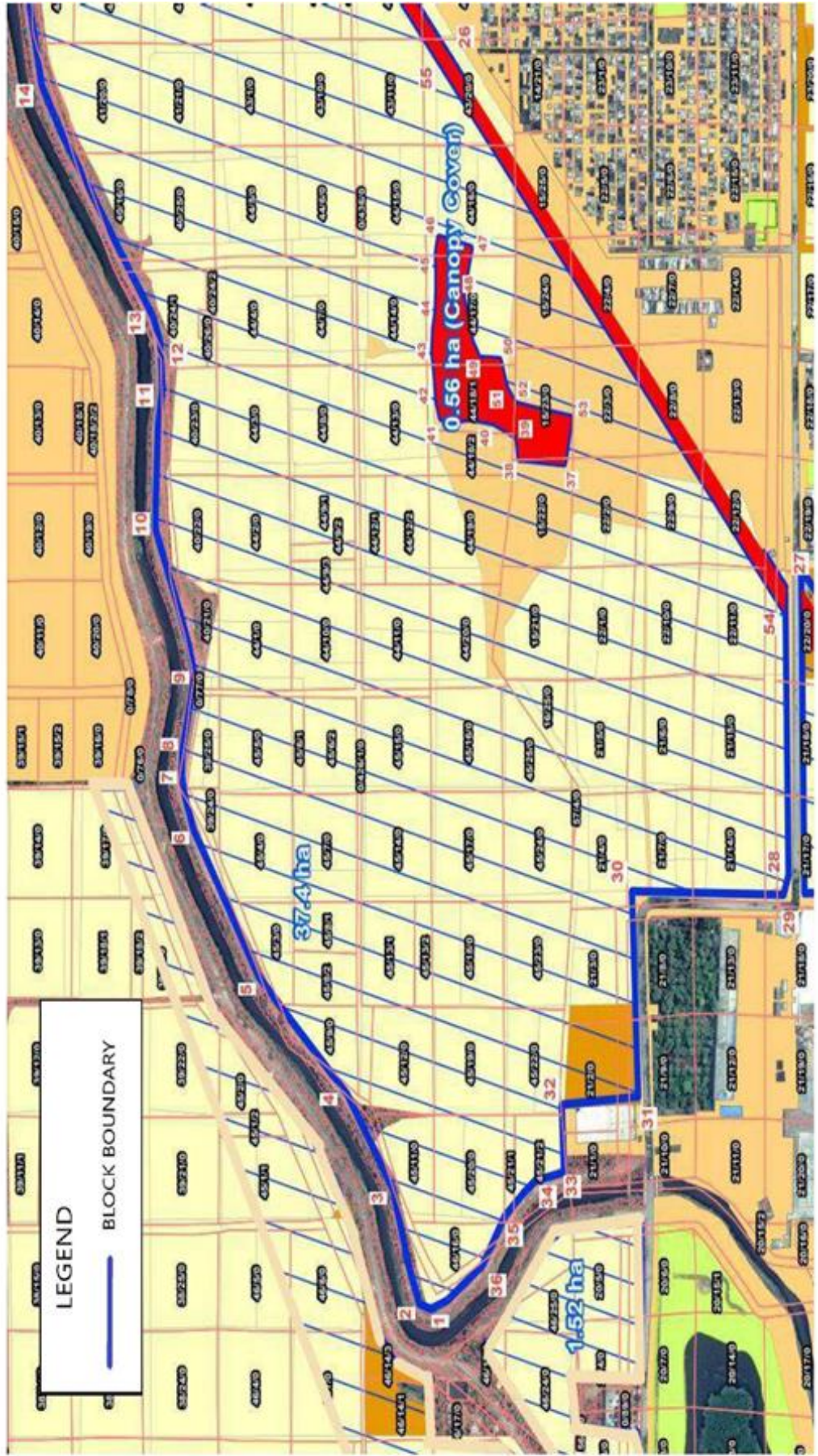


MAP OF BLOCK 4

SCHEDULE 2



SCHEDULE 2 MAP OF BLOCK 4 PART 2

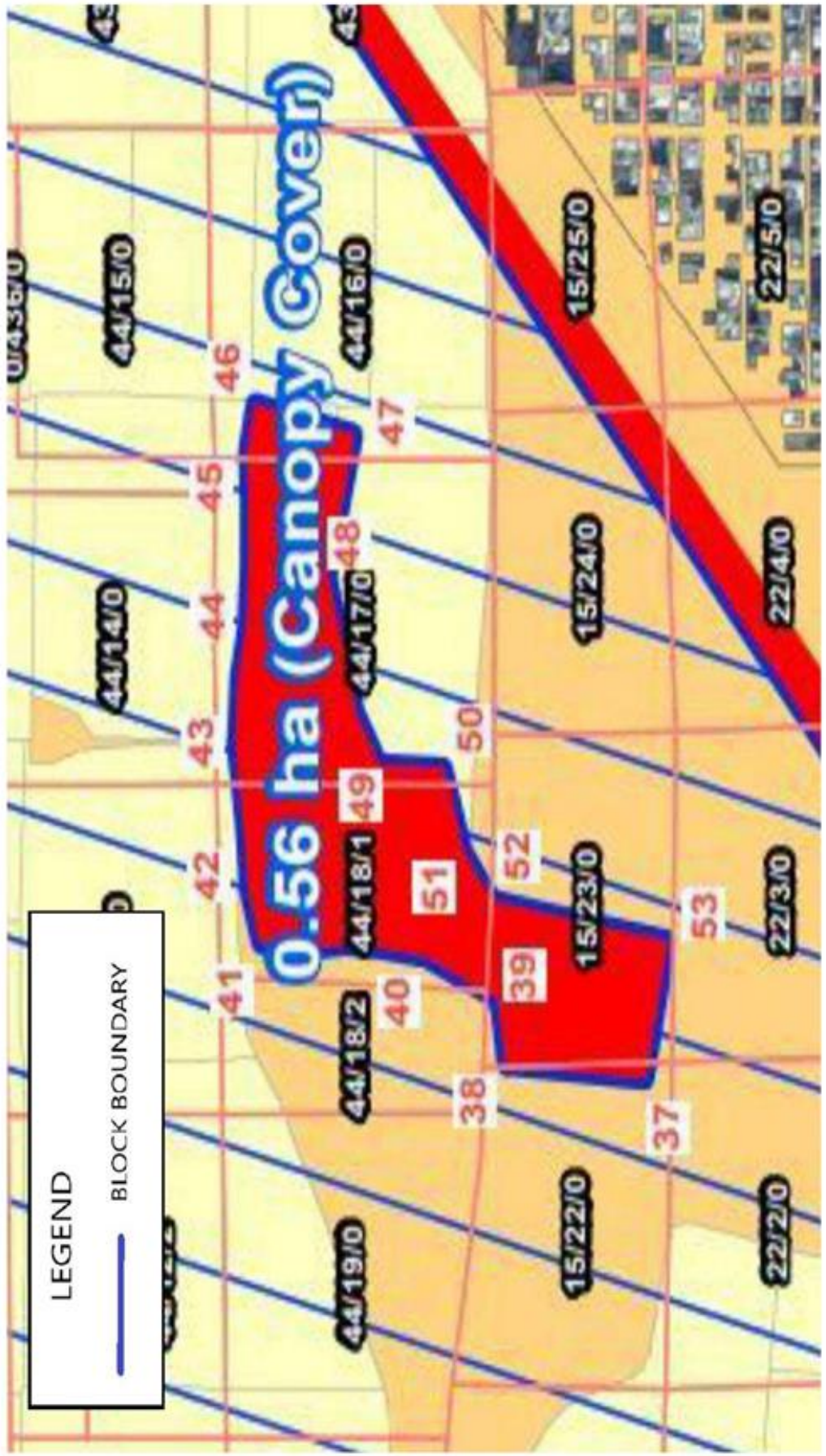


MAP OF BLOCK 4 PART 3

SCHEDULE 2



SCHEDULE 2
MAP OF BLOCK 4 PART 4



Geocoordinates of Block 1		
S.No.	Latitude	Longitude
1	28°48'23.92"N	77° 4'59.46"E
2	28°48'31.32"N	77° 4'59.70"E
3	28°48'31.15"N	77° 5'4.19"E
4	28°48'31.10"N	77° 5'7.18"E
5	28°48'34.70"N	77° 5'7.18"E
6	28°48'34.68"N	77° 5'14.57"E
7	28°48'26.48"N	77° 5'4.05"E
8	28°48'24.89"N	77° 5'1.97"E
9	28°48'26.60"N	77° 4'59.56"E
10	28°48'27.34"N	77° 4'59.58"E
11	28°48'28.78"N	77° 5'4.11"E
12	28°48'28.09"N	77° 5'4.10"E
13	28°48'28.66"N	77° 5'5.72"E
14	28°48'28.89"N	77° 5'6.25"E
15	28°48'34.67"N	77° 5'14.10"E
16	28°48'34.69"N	77° 5'13.08"E
17	28°48'29.31"N	77° 5'5.52"E

Geocoordinates of Block 2		
S. No.	Latitude	Longitude
1	28°48'38.73"N	77° 4'48.92"E
2	28°48'38.61"N	77° 4'48.53"E
3	28°48'41.59"N	77° 4'43.79"E
4	28°48'42.16"N	77° 4'42.53"E
5	28°48'54.17"N	77° 5'9.98"E
6	28°48'53.15"N	77° 5'9.98"E
7	28°48'52.61"N	77° 5'8.38"E
8	28°48'50.88"N	77° 5'4.68"E
9	28°48'48.47"N	77° 5'2.10"E
10	28°48'47.64"N	77° 5'0.74"E
11	28°48'47.36"N	77° 4'60.00"E
12	28°48'46.66"N	77° 4'57.52"E
13	28°48'46.16"N	77° 4'56.73"E
14	28°48'45.12"N	77° 4'56.31"E
15	28°48'45.19"N	77° 4'54.83"E
16	28°48'43.28"N	77° 4'54.68"E
17	28°48'41.27"N	77° 4'52.18"E
18	28°48'40.16"N	77° 4'50.58"E
19	28°48'39.86"N	77° 4'50.65"E
20	28°48'39.70"N	77° 4'50.48"E
21	28°48'39.53"N	77° 4'50.04"E

Geocoordinates of Block 3		
S.No.	Latitude	Longitude
1	28°48'39.48"N	77° 4'51.20"E
2	28°48'40.28"N	77° 4'52.52"E

3	28°48'41.22"N	77° 4'53.82"E
4	28°48'43.68"N	77° 4'56.98"E
5	28°48'42.98"N	77° 4'57.64"E
6	28°48'41.87"N	77° 4'59.35"E
7	28°48'41.48"N	77° 4'59.61"E
8	28°48'39.32"N	77° 4'59.79"E
9	28°48'39.33"N	77° 4'57.95"E
10	28°48'39.45"N	77° 4'56.20"E
11	28°48'41.27"N	77° 4'56.26"E
12	28°48'41.23"N	77° 4'55.04"E
13	28°48'39.49"N	77° 4'54.98"E

Geocoordinates for Block 4**Geocoordinates of Block 4**

S.No.	Latitude	Longitude
1	28°48'45.11"N	77° 4'57.89"E
2	28°48'45.42"N	77° 4'58.00"E
3	28°48'46.11"N	77° 5'0.63"E
4	28°48'47.30"N	77° 5'2.75"E
5	28°48'49.74"N	77° 5'5.59"E
6	28°48'51.47"N	77° 5'8.94"E
7	28°48'51.77"N	77° 5'10.21"E
8	28°48'51.75"N	77° 5'10.75"E
9	28°48'51.40"N	77° 5'12.51"E
10	28°48'52.39"N	77° 5'15.81"E
11	28°48'52.17"N	77° 5'19.05"E
12	28°48'52.24"N	77° 5'20.21"E
13	28°48'52.41"N	77° 5'20.68"E
14	28°48'55.36"N	77° 5'26.01"E
15	28°48'56.22"N	77° 5'31.66"E
16	28°48'56.46"N	77° 5'32.97"E
17	28°48'56.50"N	77° 5'33.79"E
18	28°48'56.44"N	77° 5'34.29"E
19	28°48'56.68"N	77° 5'35.52"E
20	28°48'58.08"N	77° 5'37.55"E
21	28°48'58.19"N	77° 5'38.14"E
22	28°48'57.61"N	77° 5'39.75"E
23	28°48'57.10"N	77° 5'40.61"E

24	28°48'56.19"N	77° 5'42.25"E
25	28°48'56.06"N	77° 5'42.91"E
26	28°48'44.13"N	77° 5'26.44"E
27	28°48'35.05"N	77° 5'14.16"E
28	28°48'35.11"N	77° 5'7.60"E
29	28°48'35.28"N	77° 5'7.12"E
30	28°48'39.42"N	77° 5'7.32"E
31	28°48'39.37"N	77° 5'2.60"E
32	28°48'41.43"N	77° 5'2.48"E
33	28°48'41.38"N	77° 5'0.95"E
34	28°48'42.18"N	77° 5'0.73"E
35	28°48'43.03"N	77° 4'59.96"E
36	28°48'43.66"N	77° 4'58.86"E
37	28°48'41.13"N	77° 5'17.15"E
38	28°48'42.33"N	77° 5'17.27"E
39	28°48'42.40"N	77° 5'17.76"E
40	28°48'43.09"N	77° 5'18.09"E
41	28°48'44.50"N	77° 5'18.22"E
42	28°48'44.61"N	77° 5'18.74"E
43	28°48'44.70"N	77° 5'19.71"E
44	28°48'44.69"N	77° 5'20.28"E
45	28°48'44.60"N	77° 5'21.95"E
46	28°48'44.49"N	77° 5'22.32"E
47	28°48'43.67"N	77° 5'22.06"E
48	28°48'43.88"N	77° 5'21.02"E
49	28°48'43.47"N	77° 5'19.57"E
50	28°48'42.89"N	77° 5'19.52"E
51	28°48'42.75"N	77° 5'18.87"E
52	28°48'42.49"N	77° 5'18.49"E
53	28°48'40.96"N	77° 5'18.16"E
54	28°48'35.11"N	77° 5'13.62"E
55	28°48'44.41"N	77° 5'26.34"E

By Order and in the Name of the
Lieutenant Governor of National Capital Territory of Delhi
SANJEEV KHIRWAR, Prinl. Secy. (Environment & Forests)